

DETAIL 15.2: SECTION A

SCALE 1:20

GENERAL SPECIFICATIONS;

DAY AND BULK STORES

ADJUSTABLE SHELVING

WALL BANDS:
POWDER COATED MILD STEEL WALL BAND
HEIGHTS AS INDICATED ON PLANS @ MAX
600mm C/C
STEEL BRACKETS:
POWDER COATED MILD STEEL
BRACKETS, 300mm
SHELVING:
16mm THICK x 300mm WIDE LAMINATED S.A
PINE (LENGTHS ACCORDING TO DETAIL
LAYOUT)
MODULAR STEEL SHELVING:
STEEL SHELVES AND SLOTTED STEEL
ANGLE POSTS AND CROSS BRACES ON
SIDES

KITCHEN

CUPBOARD SPEC NOTE

CUPBOARD CARCASSES TO BE 16mm
DOUBLE FACED BISONBOARD WITH WHITE
MELAMINE FINISH
CUPBOARD DOORS TO BE 16mm DOUBLE
FACED BISONBOARD WITH WHITE MELAMINE
FINISH, SQUARE EDGED WITH 5mm WHITE
PVC EDGING ALL ROUND

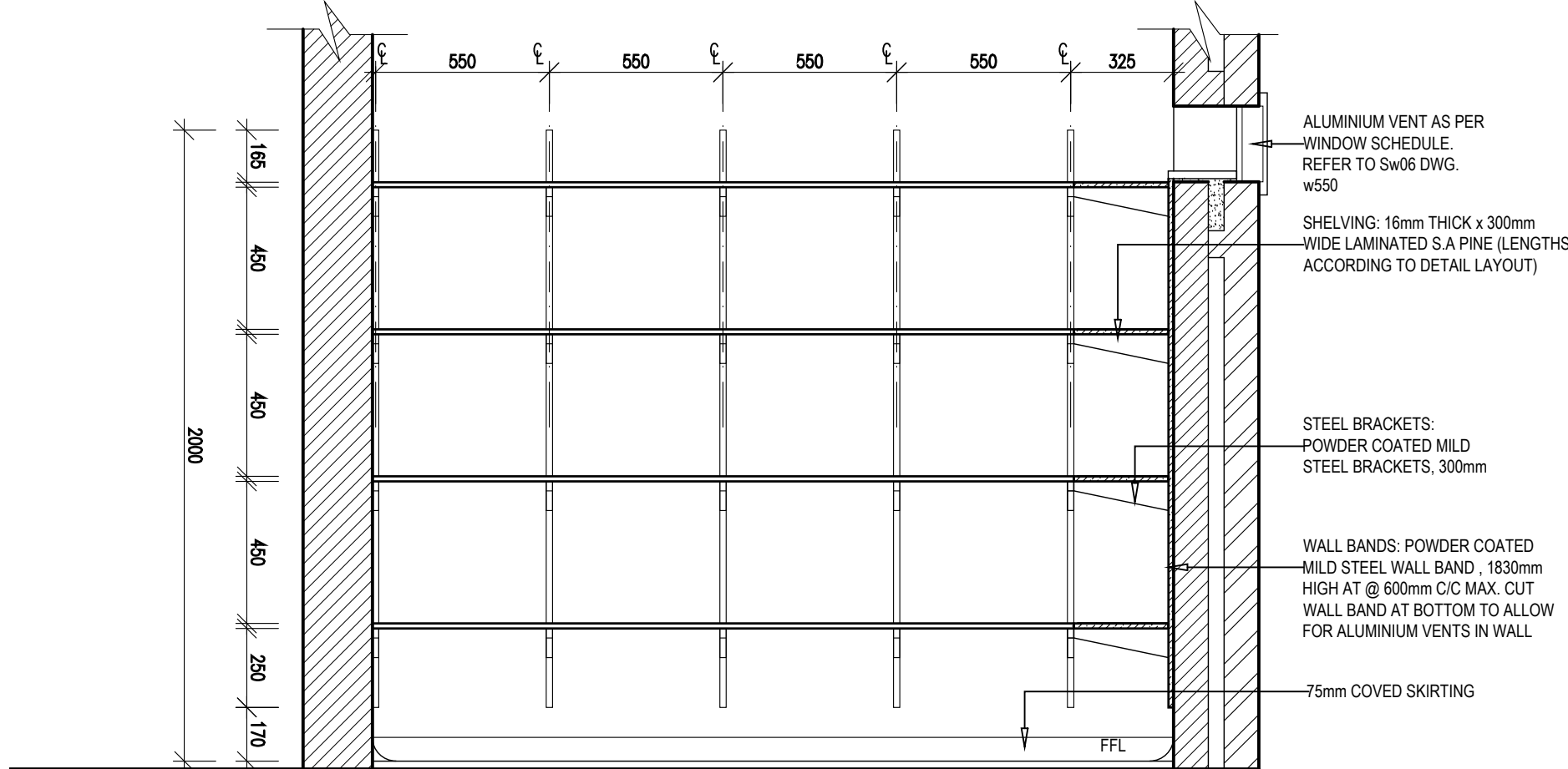
GRANITE COUNTER TOPS TO BE 30mm THICK
COUNTER TOPS TO HAVE 50mm HIGH
GRANITE SKIRTING

VEG STORE

FIXED SHELVES

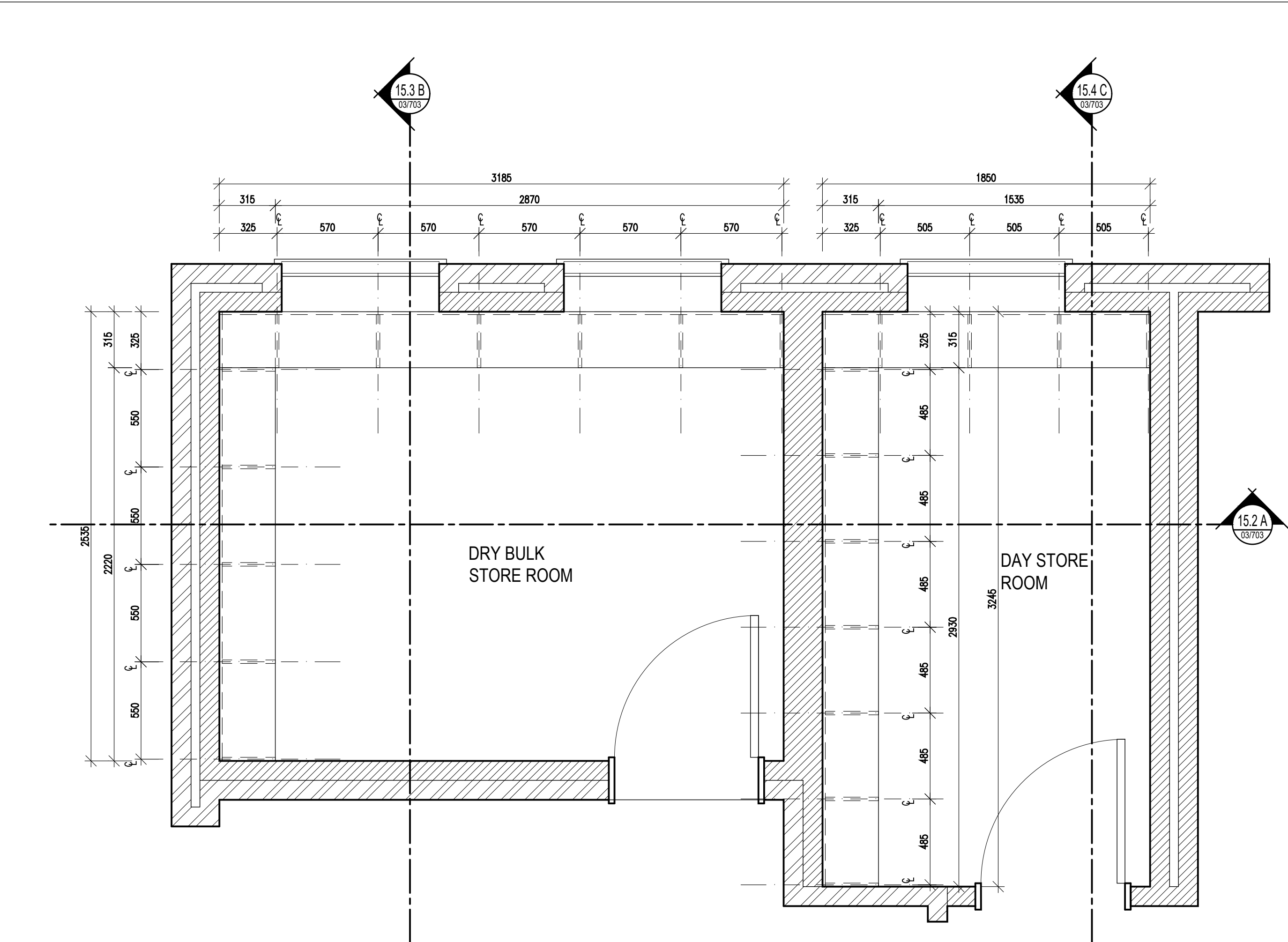
ALL SALIGNA BOARDS TO BE SLIGHTLY
ROUNDED, THOROUGHLY SANDED AND
VANISHED WITH CLEAR PLASCON VARNISH

WORKSHOP DRAWINGS TO BE SUBMITTED
TO ARCHITECT BEFORE ANY WORK
COMMENCES



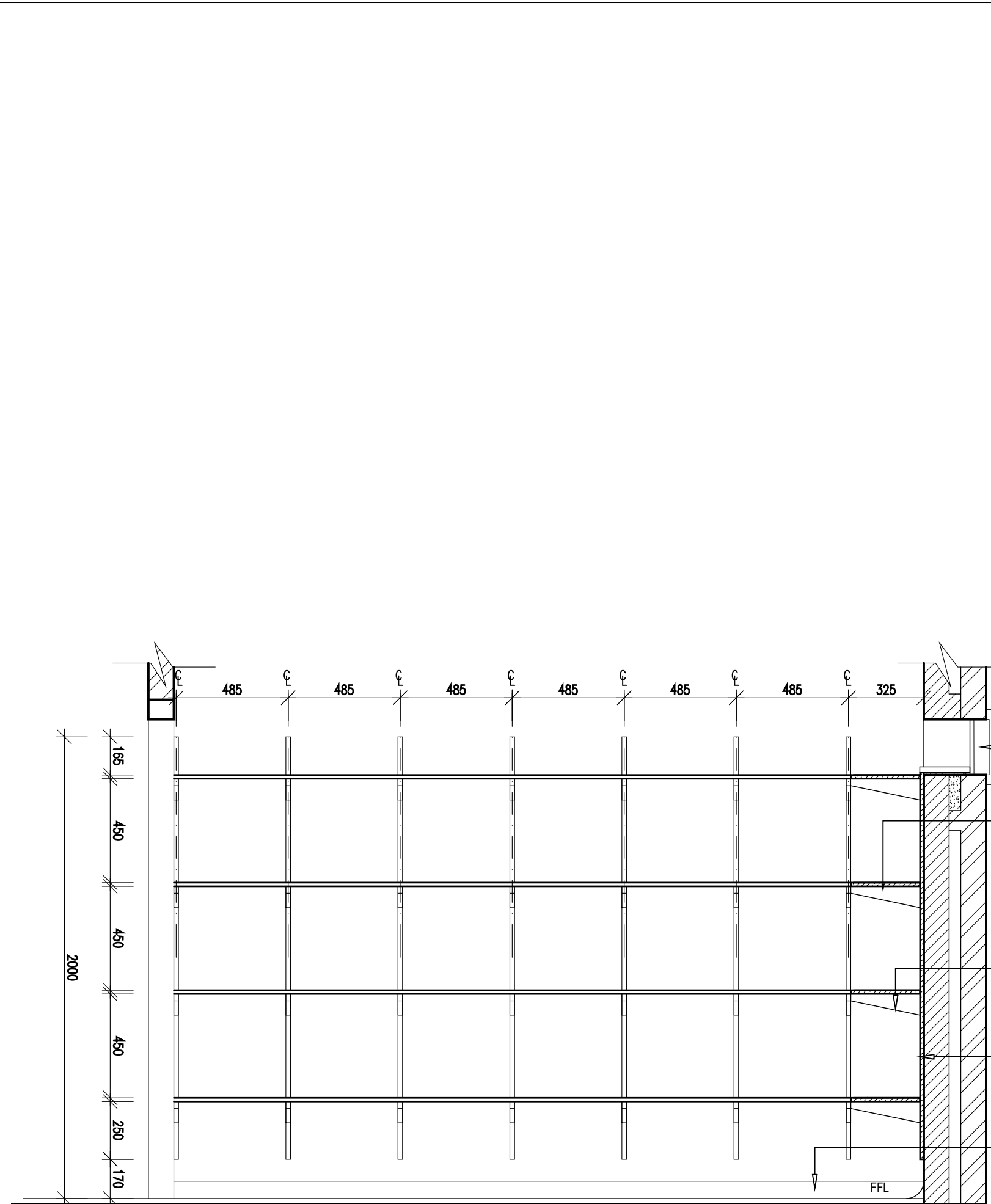
DETAIL 15.3: SECTION B

SCALE 1:20



DETAIL 15.1: DRY BULK STORE AND DAY STORE PLAN

SCALE 1:20



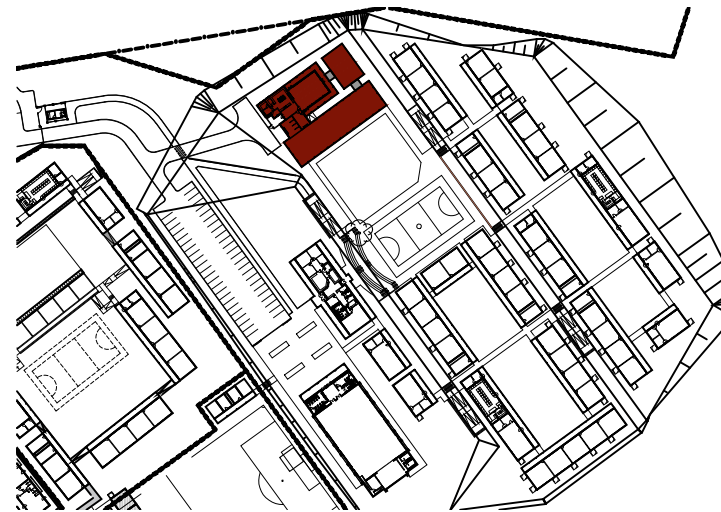
DETAIL 15.4: SECTION C

SCALE 1:20

NO.	DATE	REVISION	DRAWN
A	2021-03-01	ISSUED FOR INFORMATION	DW RJS
B	2022-07-08 2022-04-13	ISSUED FOR MEASURE ISSUED FOR INFORMATION (EPMS) 1. DWG NO. CHANGED FROM 1617 TO 2204	DW

ISSUED FOR
APPROVAL

KEY



PSP

ARCHITECT



ARCHITECTURAL PROFESSIONAL SACAP NUMBERS:

H.L. MANTEL SACAP 3045

IMPLEMENTED BY

INDEPENDENT
DEVELOPMENT
TRUST

SIGNATURE	DATE	SHEET NO.
-	-	A1
DESIGNED	-	SCALE
DRAWN	SG	1:100
VERIFIED	-	STATUS LEGEND
VALIDATED	-	FM = FOR MEASURE T = TENDER C = CONSTRUCTION AB = AS BUILT CO = CO-ORDINATION

CLIENT



PROJECT
DOE PORTFOLIO PROGRAMME
ESTABLISHMENT OF NEW SCHOOLS
HILLBROW - SENIOR SECONDARY SCHOOL
PROVINCE: EASTERN CAPE PROVINCE

DRAWING TITLE
NUTRITION CENTRE (LARGE)(BLOCKS-C)
JOINERY DETAILS PART 4 OF 4
DRY BULK AND DAY STORE ROOMS

DRAWING DESCRIPTION

-

Stand Co-Ordinate:	DRAWING NUMBER	DISCIPLINE	STATUS	REVISION
200500293	ARCH	2204	FA	B
		w07-03/703		

DRY BULK STORE AND DAY STORE